

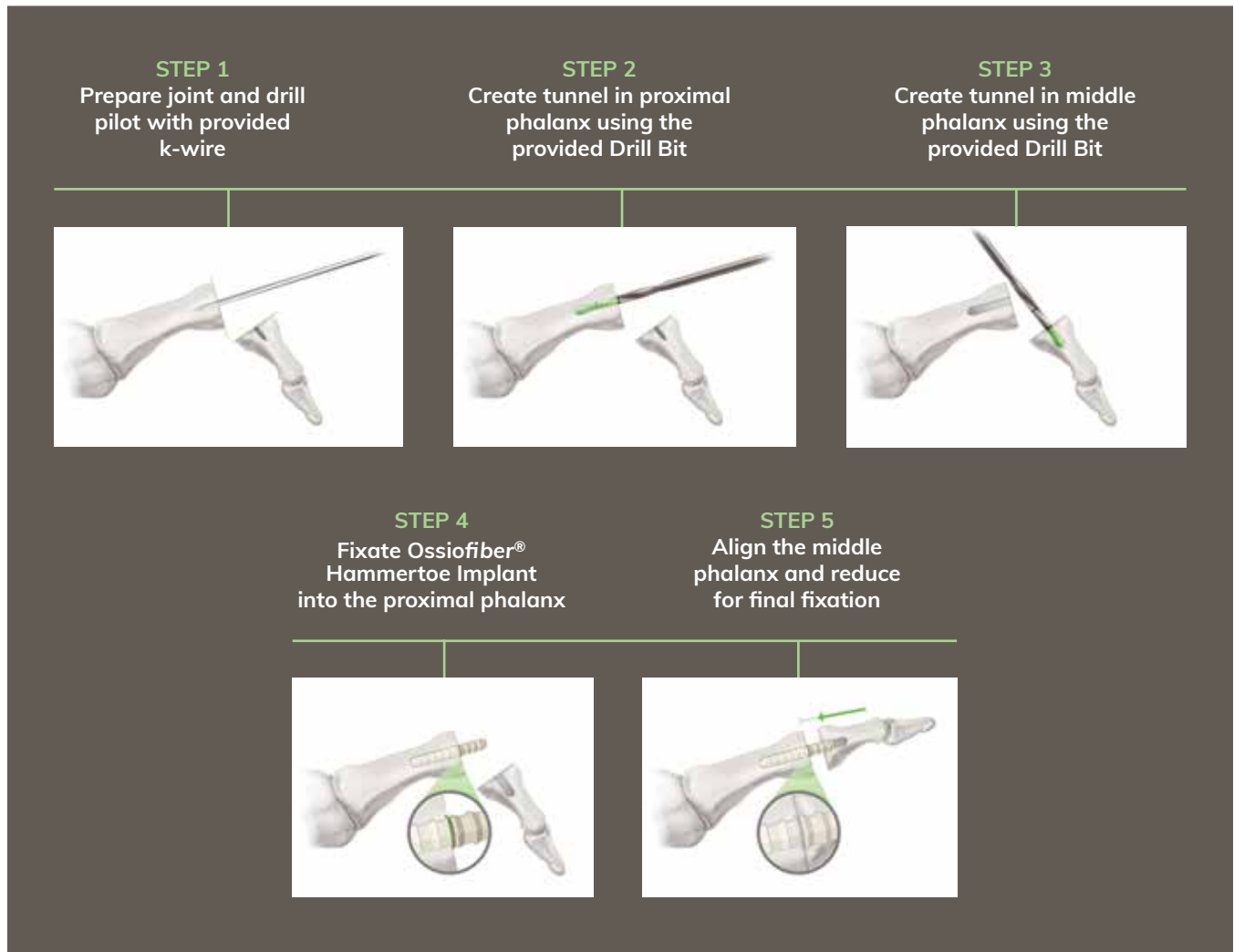
OSSIOfiber® HAMMERTOE FIXATION SYSTEM

Indications

The OSSIOfiber® Hammertoe Fixation System is indicated for maintenance of alignment and fixation of bone fractures, osteotomies, arthrodesis, and bone grafts in the presence of appropriate additional immobilization (e.g. rigid fixation implants, cast, brace)

OSSIOfiber® Hammertoe Fixation System Surgical Procedure

Utilizing common surgical techniques for proximal interphalangeal (PIP) fusions, the bio-integrative OSSIOfiber® Hammertoe Fixation System is designed to achieve the desired stable fixation. OSSIOfiber® Intelligent Bone Regeneration Technology gradually incorporates into the surrounding anatomy, leaving nothing permanent behind.



Refer to the product Instructions for Use for warnings, precautions, indications, contraindications, and complete technique. Medical professionals must use their professional judgment in making any final determinations for product usage and technique.